



Health First Lake County Plan

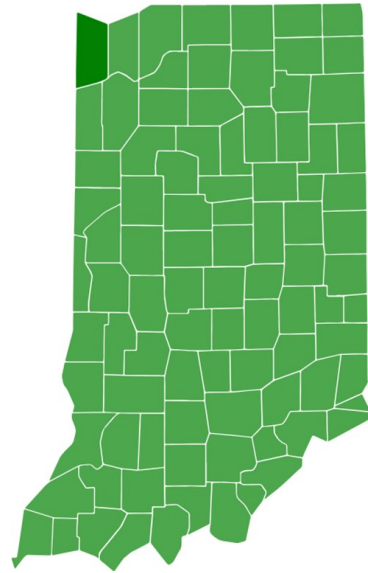
2024-2025



health first
LAKE COUNTY

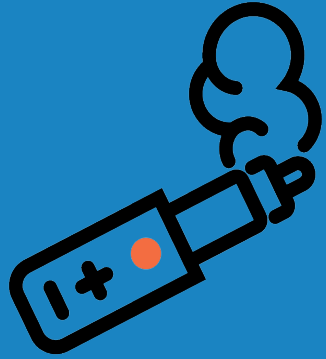


Lake County Scorecard



| Topic | Indiana Rate | County Rate | Rank |
|--|--------------|-------------|------|
| Adult Obesity | 35% | 38% | #74 |
| Children < 3 Years Old Completing Recommended Vaccine Series | 57.7% | 42.5% | #90 |
| Infant Mortality Rate | 6.8 | 8.00 | #60 |
| Life Expectancy | 76.5 | 75.7 | #61 |
| Smoking Rate | 21.0% | 18.6% | #15 |
| Suicide Rate | 17.2 | 11.9 | #8 |
| Years of Potential Life Lost Due to Injury (Age-Adjusted) | 2527.14 | 3061.5 | #69 |





Tobacco and vaping prevention and cessation

- KPI: *Number of counties that through a tobacco prevention and cessation coalition have a comprehensive program to address youth tobacco and addictive nicotine prevention.*

★ LCHD meets KPI

PLAN AND PARTNERSHIPS:

- LCHD partnered with the Lake County Tobacco Coalition (Community Advocates of Northern Indiana and Franciscan Health)





Maternal and child health

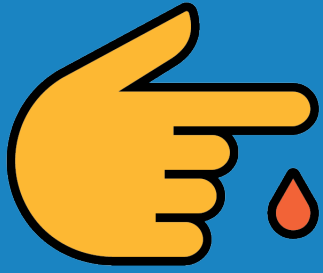
- **KPI:** *Number of counties with documented process to refer families to needed services including contraceptive care, WIC, home visiting, prenatal care, substance use disorder treatment, and insurance navigation*



Currently LCHD meets KPI

- **Plan & Potential Partnerships:**
 - LCHD Mobile Health Unit
 - LCHD to Implement 2 MCH clinics (North & South Co.)
 - The Foodbank of NWI- Infant/Maternal Pantry Pack
 - St. John Fire Department- Health and Safety services (car safety seats, car safety inspections, cribs, and sleep sacks), safe sleep education, community assistance (referrals), and Food & Nutrition (WIC and local food pantries)
 - Mental Health America NWI- Safe Sleep Education (includes pack and plays and swaddles)
 - Geminus: Head Start Prenatal Program





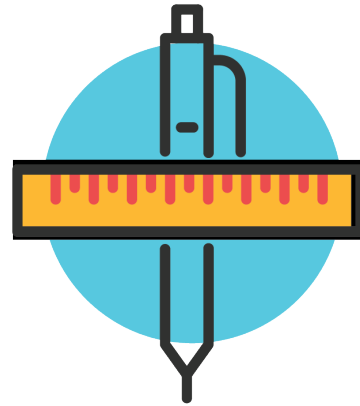
Chronic disease prevention and reduction

- KPI: *Number of counties that through a healthy community coalition have a comprehensive, evidence-based program to address obesity and obesity-related disease prevention*

★ Currently LCHD meets KPI

- **POTENTIAL PARTNERSHIPS:**
 - Purdue Extension- Fighting Chronic Illness Through Education
 - Purdue Extension- Nutrition Education Program
 - Indiana University School of Medicine NW- Improving health through health screenings and referrals
 - St. John Fire Department-Mobile Integrated health





Student health

- *KPI: Number of counties partnering with schools, based on community need, to implement wellness policies and comprehensive strategies to promote student health*

◆ Currently in process

- **Plan & Partnerships:**
 - LCHD to hire three (3) school liaisons in 2024
 - LCHD Mobile Health Unit
 - St. John Fire Department (potential partnership)- Provide Education
 - IUSM NW (potential partnership)- Presentations for children at local schools and summer camps





Trauma and injury prevention and education

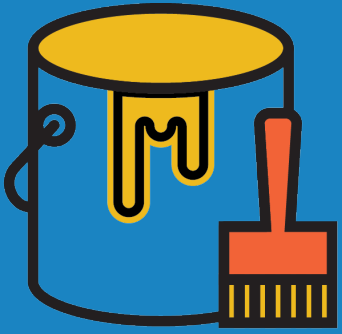
- *KPI: Number of counties that identified a leading cause of injury and/or harm in their community and implemented a comprehensive, evidence-based program or activity prevention*

★ Currently LCHD meets KPI

- **POTENTIAL PARTNERSHIPS:**

- Geminus- Lake County Crisis Intervention Team
- St. John Fire Department- Preventing harm due to injury and substance use and facilitating access to trauma care
- Mental Health America NWI- Gun Safety Program
- Purdue Extension- A Matter of Balance (Managing Concerns About Falls)





Childhood lead screenings and case management

- KPI: *Number of counties with access to a trained case manager and risk assessor in the county and offering weekly lead testing at a location in the county*

◆ LCHD *somewhat* meets KPI

- **PLAN & PARTNERSHIPS:**
 - LCHD to hire one (1) Medical Assistant for Lead & Risk Assessment (*lead & risk assessor must attend both trainings and meet state requirements*)





Referrals to clinical care

- *KPI: Number of local health departments providing accessible, equitable clinical services, such as those related to communicable diseases, to meet the needs of the community*
- *KPI: Number of local health departments engaging with the local and state health delivery system to address gaps and barriers to health services and connect the population to needed health and social services that support the whole person, including preventative and mental health services*

Somewhat meets KPI



- **Plan & Partnerships:**
 - ASPIN insurance navigator
 - St. John Fire Department (potential partnership)-facilitate access to healthcare services
 - IUSM NW (potential partnership)- perform health screenings and provide referrals on health topics and disease prevention
 - Geminus (partnership)- provide referrals to clinical care



Fatality review (child, suicide, overdose)

- KPI: *Number of counties that participate in local CFR, FIMR, and SOFR teams and provide birth certificates, stillbirth certificates, and death certificates to local fatality review teams*
- KPI: *Number of counties that identified a leading cause of fatality in their community and implanted an evidence-based or promising prevention program or activity*

LCHD meets KPI



- **Plans & Partnerships:**
 - St. John Fire Department (potential partnership)- Deliver equipment & resources (cribs, sleep sacks, education, and firearm locks) and provide training about 988 and crisis resources





TB control and case management

- KPI: *Number of counties with established partnerships for housing, food, security, and interpretation services to assist in case management services for patients with TB and latent TB infection in their communities*

◆ CHD *somewhat* meets KPI

- **Plans & Partnerships:**
 - LCHD to hire a TB Case Manager
 - LCHD nurses were trained in phlebotomy by IDOH in June 2024



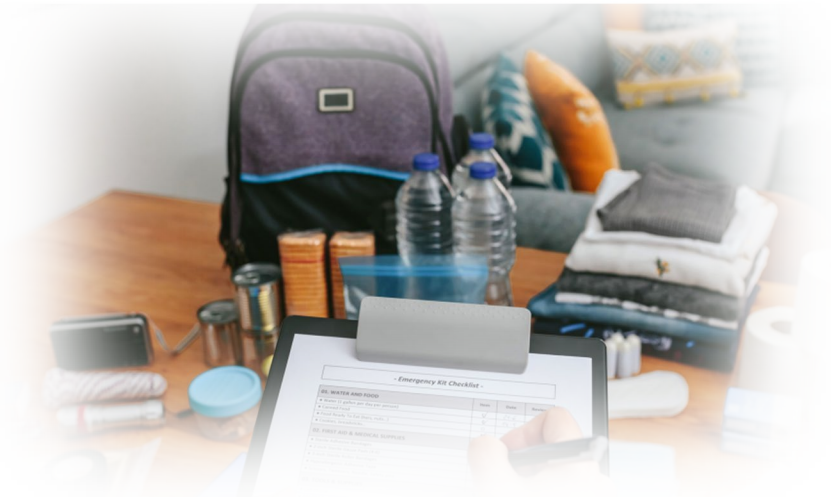


Emergency preparedness

- **KPI: *Number of counties that have updated public health emergency response plans***
- **KPI: *Number of counties exercising current emergency response plans with community partners within a biennial timeframe***



LCHD meets KPI



LCHD division of Emergency Preparedness- currently reviewing, researching, and incorporating lessons learned from real world events (Covid-19) into our ***All Hazards Plan***-this includes multiple community response partners from Lake County and District 1 (LC EMA & 6 other health departments in District 1)

The annual plan and annex review prepare LCHD to be able to respond to health-related areas during emergency and disasters.

- **Exercising plans and personnel:**

- LCHD Division of Emergency Preparedness participated in the Annual Indiana District 1 Medical Response Surge Exercise (MRSE)
- Exercise included District 1 hospitals, EMS, Health Departments and EMA's which tested jurisdictional capabilities

**This exercise, future exercises, as well as review and updating of plans, partnership reviews and addressing areas of improvement, all contribute to their working toward best practices and reaching KPI's*



Emergency Preparedness



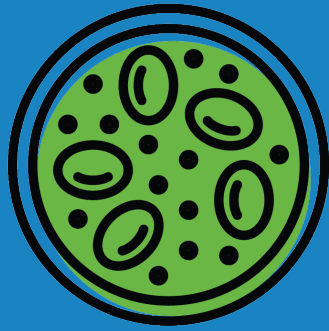
Child and adult immunizations

- *KPI: Number of counties that can vaccinate all individuals at time of service regardless of insurance status*
- *KPI: Number of counties with extended vaccination hours beyond routine business hours to meet the needs of the community/jurisdiction through the LHD or community partners*

★ LCHD meets KPI

- **Plans & Partnerships:**
 - LCHD to hire a PHN
 - Indiana Immunization Coalition Partnership
 - LCHD Mobile Clinic





Infectious disease prevention and control

- *KPI: Number of counties that initiated a public health investigation within 24 hours for 95% of the immediately reportable conditions reported to them and within two business days for 85% of non-immediately reportable conditions reported to them*

★ LCHD meets KPI

- **Plans & Partnerships:**
 - LCHD to implement STI/HIV Clinic (testing & treatment)
 - LCHD plans to hire clinic coordinator (RN, LPN)
 - The Aliveness Project potential partnership





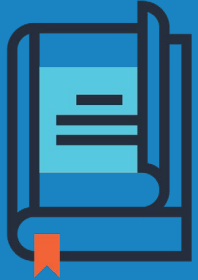
Food protection

- *KPI: Number of counties that have developed a timely and professional risk-based food inspection standard operation procedure*

★ LCHD meets KPI

- **Plan:**
 - LCHD to hire two (2) food inspectors
 - LCHD to provide pest control training to food inspectors (requested by inspectors)





Vital records

- KPI: *Number of counties implementing birth certificates to all Hoosiers irrespective of their county of birth once the IDOH DRIVE system has appropriate functionality*
- KPI: *Number of counties able to offer Vital Records services without disruption to business continuity during natural disasters/emergencies*

LCHD does *not* currently meet KPI



- **Plans & Partnerships:**
 - LCHD to partner/contract to convert old/historic files to drive



Environmental Public Health

- KPI: *Number of counties responding to all housing and nuisance complaints within a timeframe determined by urgency or risk*
- KPI: *Number of counties with trained and licensed, if required, staff conducting required environmental inspections, such as onsite sewage, vector control, public and semi-public pools, and property-related complaints*

★ LCHD meets KPI

- **Plans & Partnerships:**
 - Digitize permits- *currently seeking vendor/resource*





Sanitary operation of facilities where eyelash extensions are performed

- KPI: *Number of counties with trained staff who can respond to tattoo, body piercing, and eyelash extension complaints (target: 90%)*

◆ LCHD does *not* meet KPI

- **Plans & Partnerships:**
 - LCHD Sanitarians attended training offered by Porter Co. in June 2024
 - Plan to provide education to establishments on health & safety

